

25-27 Dalston Lane

Where: Dalston, E8. Who For: Landview Homes. What: 6 units, 3198 sqm commercial



25-27 Dalston Lane

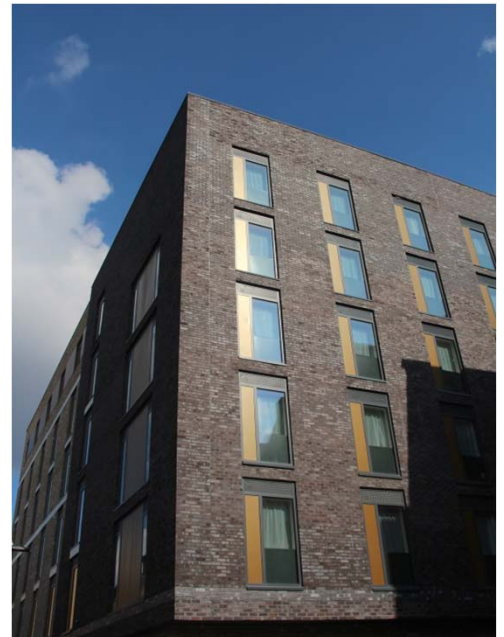
Architect: Stephen Davy Peter Smith

This proposal involved a redevelopment of a vacant site, used on occasions for car parking, within the London Borough of Hackney. The site was located close to Dalston centre, and opposite the new London Overground Dalston Station.

The proposal involved the erection of a new six storey building, which contains a 70 bed hotel, two commercial units at ground level and six residential units at the top floor (although this was subsequently amended to remove the residential units and increase the number of hotel bedrooms to 90).

CMA Planning worked with the project team through the planning process to address a number of areas including the land use, height and massing, sustainability, relationship between the three uses within the proposal, impact to neighbouring residential properties and viability in relation to section 106 contributions.

CMA Planning presented the proposals to the Planning Committee at the London Borough of Hackney and secured planning permission in March 2012 for the scheme. The project was then completed in 2014 for Premier Inn.



CMA Planning

113 The Timberyard, Drysdale Street, London, N1 6ND
www.CMA-Planning.co.uk