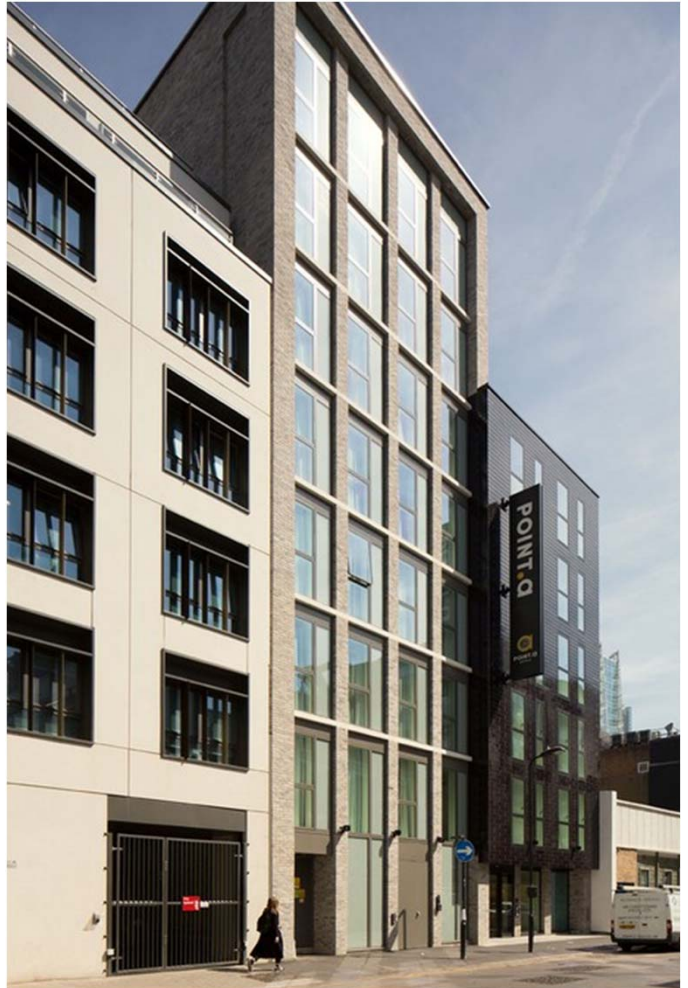


# 8-10 Paul Street

Where: Shoreditch. Who For: Paul Street Ltd. What: 113 Bedroom Hotel (3806 sqm)



Architect: Waugh Thistleton

## 8-10 Paul Street, EC2

8-10 Paul Street is located in the South Shoreditch Conservation Area and was occupied by a two storey office block with car parking facilities. The proposal replaced this with a six to eight part storey hotel and small bar/restaurant, designed with consideration to the unique urban context of the area.

The new hotel draws inspiration from the traditional warehouse and modern city buildings found in proximity to the site and its massing carefully relates to this. The building is divided into distinct volumes, breaking down the overall volume facing Paul Street.

The bedrooms are organised around a C-shaped circulation zone, ensuring that all have pleasant views and benefit from direct sunlight, as well as creating a south facing courtyard. The external courtyard serves as a communal space for the benefit of hotel residents and public who use the bar and restaurant, with the facade treatment used to create an intimate and inviting space.

Overall a considered range of materials will be used externally on the building: patterned tiles and timber windows in the courtyard; brickwork for the taller vertical block; and ceramic tile cladding the two smaller blocks.

Planning permission was obtained in November 2013 and the point.a hotel opened in 2017.